



Belfast
**School of
Theology**
at Stranmillis

*A School of Saints
and Scholars*

School Prospectus

www.bst.ac.uk



Contents

04	WELCOME
06	WHAT MAKES US UNIQUE?
10	WHERE DOES THEOLOGY LEAD?
14	OUR NEW LOCATION
20	LIVING ON CAMPUS
22	FACULTY
24	OUR COMMUNITY
26	PASTORAL CARE
28	BA (HONS)
40	HE CERT
41	VALIDATION & QAA
42	PLACEMENT
44	GRAD CERT
46	GRAD DIP
48	ONLINE MA
52	PG CERT
53	PG DIPLOMA
54	MA SCHOLARSHIPS
56	INDIVIDUAL MODULES
58	PASTORAL CARE
60	CATALYST COURSES
66	WSF
68	ACCESS TO LEARNING
69	FINANCING & FEES
70	APPLY





Get Informed

We have a number of Open Days for you to find out what it is like to study at the School. These may be on-site or online. Check out our website or social media to find out when they're coming up.

Or if you want to come along for a visit at another time, we can arrange for you to have an individual tour and a chat with our Admissions staff.

From the point of application to receiving an offer normally takes 3-4 weeks.



Principal's Welcome

REV James Burnett
The Principal

Welcome

Hello...

Welcome to Belfast School of Theology's latest prospectus.

I hope we can serve **you** as you seek God's purpose, training and direction for your life. The Christian life is an audacious journey best walked in the company of fellow learners and doers of the Word.

As a theological college, BST's mission is to serve the Church locally and globally. Founded in 1943, the School continues to grow and develop in a different cultural setting, meeting the educational and spiritual needs of new generations of followers of Jesus by offering both university and adult education courses.

Our undergraduate and postgraduate degrees are validated by the University of Cumbria in England, but the quality of education, not to mention the vibrancy of community life, are very much 'made in Ireland.'

As a student, you will have opportunities to get involved in local pioneering missional projects; the School, however, also offers students exciting assignments overseas and cross-culturally.

The word 'prospectus' comes from Latin. It means 'to look forward'. As you consider your training needs in the light of God's mission, I hope and pray the Lord will lead you to join us here at Belfast School of Theology, situated in the heart of the university area of Belfast as part of the Stranmillis University College campus.

James

Why Study Theology?

“If you do not listen to theology, that will not mean that you have no ideas about God. It will mean that you have a lot of wrong ones.”

C.S. Lewis
Mere Christianity





What *Makes* Us **Unique?**

SPIRITUAL FORMATION AND FAITH COMMUNITY

There are only a few places in the UK where you can study in a context like Belfast School of Theology - where worship, prayer, fellowship and routines of faith and spirituality are built into the School daily and weekly routines.

COMBINATION OF QUALITY ACADEMIC TEACHING AND PRACTICAL TRAINING

Practical training and placements are part of most of our undergraduate courses, offering learning experiences from serving as part of a community of faith. We also have an excellent lecturing team who will develop your knowledge and stimulate your thinking.



CROSS-CULTURAL AND CROSS-DENOMINATIONAL

BST has students from many different Christian denominations and is also happy to receive and process applications made by those who come from different cultures and backgrounds. This serves to enhance the process of learning. Theology is best studied in an environment where students can learn to challenge each other's thinking in a constructive and respectful way, where students can build up one another's faith.



At BST we focus on being: AFFECTIVE - HEART

We aim to be self-aware and teachable, knowing our personal strengths and weaknesses, values and beliefs.

We are committed to personal growth and development through accountable relationships, seeking spiritual growth.

We want students to be confident in their faith and what they believe.

At BST we focus on being: COGNITIVE - HEAD

We think critically about the significance of context and are able to analyse society and culture.

We develop solutions and appropriate responses to contemporary issues.

We appreciate the complexities of theological thinking, interpreting Scripture in a responsible way, and have a good understanding of Christian Theology.

At BST we focus on: BEHAVIOUR - HANDS

We aim to continually improve our practice by integrating experience with theory.

We act ethically, demonstrating wisdom and integrity.

We relate to others positively, demonstrating compassion, gentleness and respect to people from different cultures, ethnicities and traditions.

Alumni Story


Leah

My name is Leah Houston, I am 22 and I have just graduated from Belfast School of Theology (formerly Belfast Bible College) in 2024. I just wanted to let you know a bit about what I'm doing now and the opportunities you can have from studying at Belfast School of Theology.

I am currently working in the Houses of Parliament. I am placed with two Lords in the Houses of Parliament Monday to Thursday working on things like research, policy briefings, attending meetings, and meeting new and interesting people every day like Theresa May.

I just want to encourage anyone interested in applying to BST today - God has a plan and some incredible opportunities that may open up after studying.





Theology

Where
**Does
Theology
Lead?**

Church

Pastor / Ministry Worker
Kids & Youth Worker
Worship Leader
Chaplain
Pastoral Care Worker
Administrator
Manager

Workplace

Social Worker
National & Local
Government Worker
Teacher in Schools
Lawyer
Advocate
Public Sector
Charity Sector



Creative

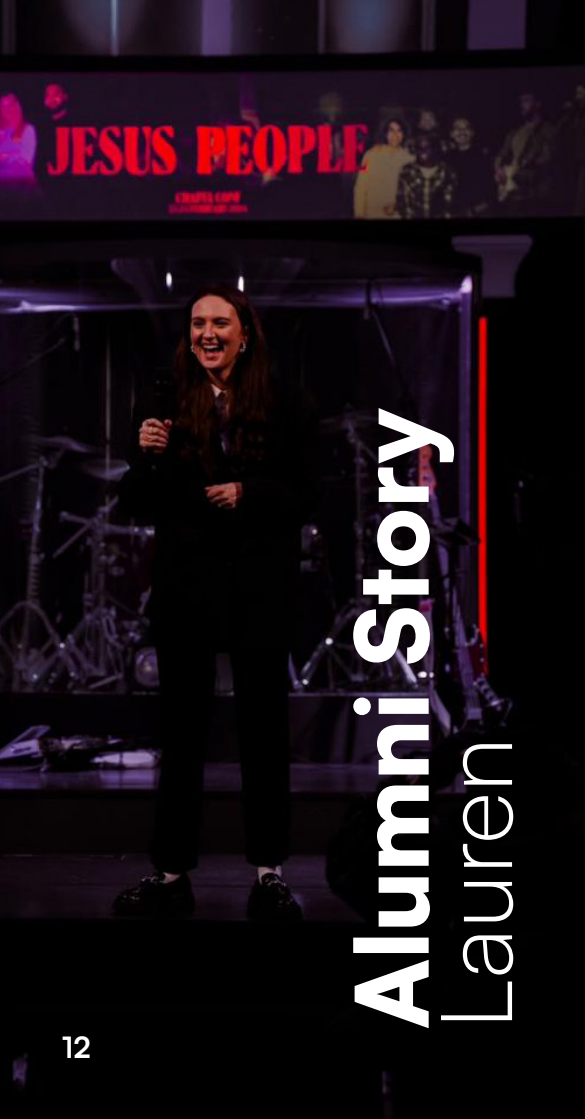
Journalist
PR + Advertising Executive
Sales + Marketing Executive
Author
Artist
Digital Content Creator
Influencer

Faith

Grow deeper in
your faith as a:
Disciple
Servant
Theological Thinker
Carrier of Good News
Justice Seeker

Mission

Church Planter
International Development Worker
Evangelist
Community Development Worker
Overseas Missions
Cross-Cultural Missions



Alumni Story Lauren

I graduated from Belfast School of Theology (formerly Belfast Bible College) in June 2016 having completed 3 years of the Queen's University Theology Degree (BTh). I then went on to complete a PGCE at Queen's University in Religious Education and Citizenship.

After completing all of my studies, I began teaching in one of my local secondary schools, doing a mixture of Religious Education and general substitute teaching. During these years, I also enjoyed serving in my local church in Portadown as well as being involved in the wider Elim Church Movement.

In 2020, my husband (also a BST graduate... and no we did not meet there, lol) and I moved to Dublin with the intention of planting a church. We moved just in time to be locked up in our ridiculously priced house, social distancing from the rest of humanity... so not much was to show for the church plant!! We created some online church content & picked up jobs in health care to make ends meet.

Emerging from lockdown in 2021, we began working for St. Mark's City Church in Dublin as Youth and Young Adult Pastors. We are still leading the young adults, preaching and leading worship at this location while also planting another St. Mark's Church in North County Dublin called SMCNorth. I still get to do some substitute teaching in one of the local secondary schools alongside raising our two little girls.

Community

The background of the slide features a photograph of two young women. The woman on the left is wearing glasses and a light-colored jacket, smiling and looking towards the right. The woman on the right is wearing a yellow top and has her sunglasses perched on her head, smiling broadly. They appear to be in a classroom or lecture hall, with a window and a screen visible in the background.

Alongside their studies, students can experience community in both online and in-person courses. This gives the opportunity to develop their gifts, grow in their faith, deepen their relationship with God, allowing Him to shape their character and spirituality.

Our New Location

With 82 Years of theological education, BST is an independent school situated on the second floor of the main Stranmillis University College building.

Nestled along the banks of the River Lagan in South Belfast, the Stranmillis University College boasts a campus that harmoniously blends natural beauty with rich heritage. Spanning 16 hectares of serene woodland, the campus serves as a tranquil haven, featuring ponds, open green spaces, and a diverse array of wildlife, all within close proximity to the vibrant city centre.

Our Teaching & Student Space

We teach in dedicated classrooms on the second floor of the front building at Stranmillis University College. These spaces are designed to support an engaging and enriching learning experience. Whether you're participating in a seminar, attending a lecture, or working in small groups, our academic environment is built to inspire you - to think critically, learn deeply, and communicate with clarity and confidence.

There is also a beautiful, light-filled room that overlooks the mature gardens at the front of the main building. This multi-purpose space serves as a communal hub for our students as well as an extra teaching & meeting space.



Library & Resources

We have a dedicated selection of physical books to aid you in your study. Students will also have access to Perlego (1M+ books and resources), and the use of the Stranmillis library block for private study.

Living On Campus

Students can now book on-site accommodation directly via Stranmillis University College - for more details see page 20.

Campus Facilities

Students can enjoy many of the great facilities that the Stranmillis campus has to offer. A vibrant canteen, coffee shop, library with private study pods and fully equipped gym & sports centre.



Study, *Live* & Enjoy

RELAX

Just minutes from the city centre, the campus feels like a world away in 16 hectares of peaceful woodland, conservation-protected and EcoCampus accredited.



UNWIND

Need a break? The campus has plenty of spots to relax and recharge—from the warmth of Betty’s Coffee Shop to the lively buzz of the Students’ Union. The Lagan tow-path is a 2 minute walk away for walks, coffee and sporting activities including rowing, tennis, cycling and running.

ENJOY

The campus grounds are a peaceful haven, home to 200-year-old trees, vibrant wildlife, and colourful marshland. From Badger Wood to the glacial Pond, there’s always something to discover—whether you’re here to study or simply enjoy the scenery.



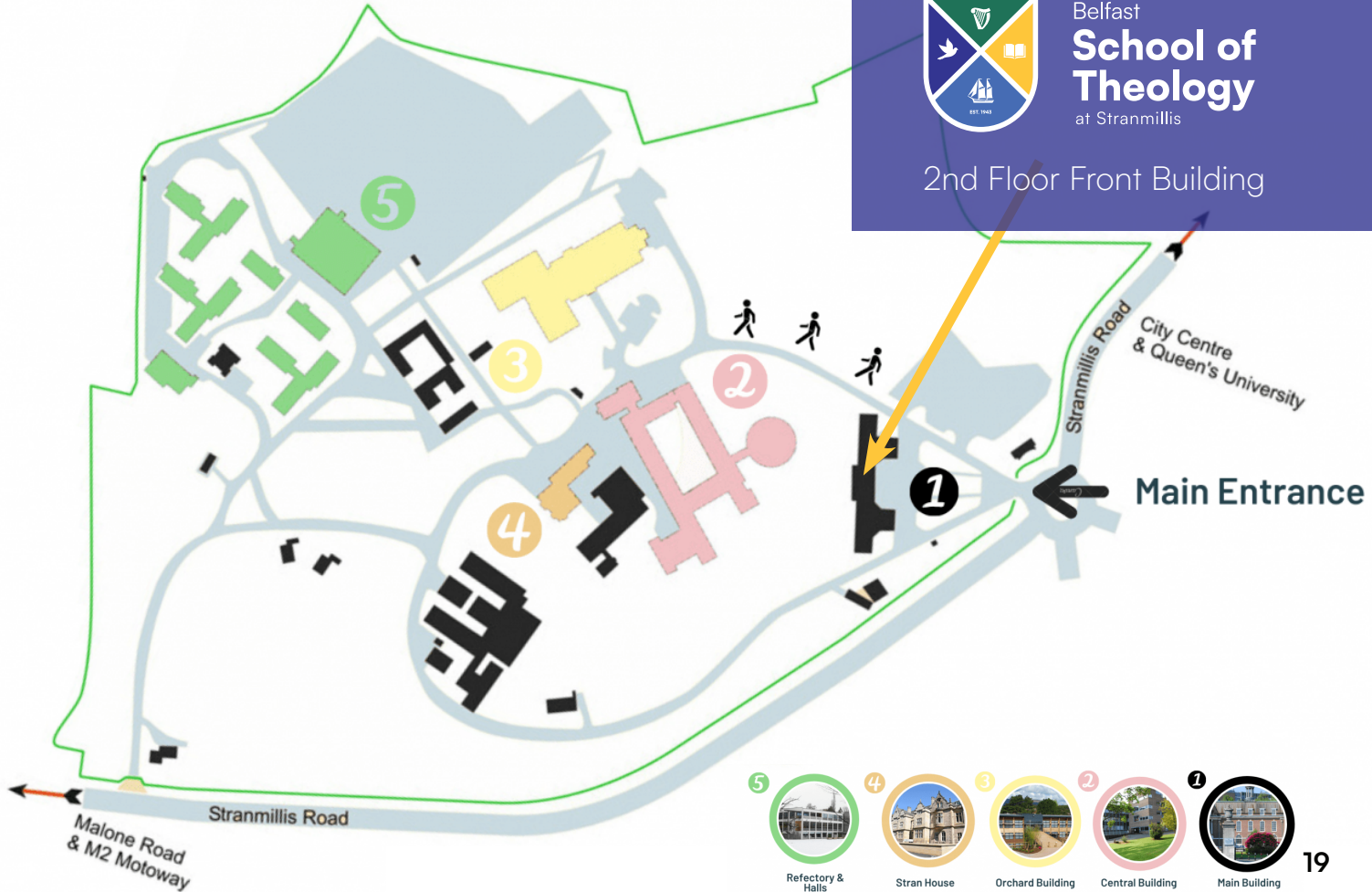
Around *The* **Campus**

Whilst Belfast School of Theology is based in the front building of the Stranmillis campus, students can enjoy the full campus, grounds and many of the facilities.



Belfast
**School of
Theology**
at Stranmillis

2nd Floor Front Building





Living On Campus

Stranmillis University College provides 411 fully furnished single-occupancy rooms across six halls of residence, offering both standard rooms with shared bathroom facilities and en-suite options with private shower and toilet. This accommodation includes a catering package - meals five days a week during term time, high-speed Wi-Fi, communal kitchens, and 24/7 security.

Accommodation is available on a first-come-first-served basis and you can apply directly via the Stranmillis website: **www.stran.ac.uk/accommodation**

For more info email: halls@stran.ac.uk



Benefits Of Living On-Site:

INFO & APPLY



www.stran.ac.uk/accommodation

Fully furnished single bedrooms

Catering package 5 days a week (term-time) -
cooked breakfast and 3 course evening meal
(Monday-Thursday) and cooked breakfast and
lunch (Friday)

All utility bills including heating, hot water and
electricity

High-speed WiFi in rooms and common areas

Cleaning of communal areas

2 FREE evening short courses

FREE membership of Gym (induction fee £20)

24/7 security team

Student common lounges and games rooms

On-site coffee shop



Faculty & Lecturers

Rev James Burnett

BA (QUB), MA (Oxon), MPhil (Cantab)

The Principal & Lecturer

James is a highly experienced leader, having served congregations in Ireland and planted churches among unreached peoples in Africa; he has worked as a youth worker, overseas missionary, minister and part-time lecturer. James is passionate about the School's role in serving the Church.

His background in Economics and Politics contribute to his role as CEO. James' love for Theology and Philosophy blossomed while studying at Oxford and Cambridge and, combined with his personal experiences of God in revival, it is no surprise to discover his research interests lie in the epistemology and understanding of the Holy Spirit.

Rev Dr Bob Keay

BA, MA, PhD, ThM, PhD

Head of Education

Bob's career spans academia and pastoral ministry. With a PhD in New Testament from the University of St Andrews and a ThM in Biblical Theology from Gordon Conwell Theological Seminary, Bob has taught at various institutions and served as a pastor in churches in New Hampshire and Connecticut.

From August 2023 to August 2024, he was the Academic Director at Spurgeon's College. He joined BST in August 2024. His academic interests include early Christianity's social world, apocalyptic thought, Pauline rhetoric, and the science-faith history. Originally from Plymouth, Massachusetts, Bob is married to Jill from Bangor, Northern Ireland.

Rev Dr Alistair Bates

BA, BD, PhD

Lecturer in Practical Theology and MA Programme Lead

Alistair trained at Elim Bible College in England from 1983—1986 before joining the Presbyterian Church in Ireland in 1988. He studied social anthropology at Queen's University Belfast, earning a BA, and later trained for ministry at Union Theological College, graduating with a BD in 1992.

He served at First Ballymena Presbyterian Church from 1994—2000 and later at Scrabo Presbyterian Church, Newtownards. In 2013, he became minister of Wellington Presbyterian Church Ballymena before taking up his role at BST. He completed a PhD at University of Glasgow in 2022.

Alistair is passionate about seeing theology lived out practically in the lives of students, churches, and communities.

Rev Dr Seoyoung Kim

BTh, MDiv, MTS, PhD

Lecturer in Applied Theology and Ministry Placements Lead

Seoyoung Kim is Lecturer in Applied Theology and Ministry Placements Programme Lead at Belfast School of Theology. She is also an Honorary Research Fellow at University of Manchester and has served as a Research Associate at the Oxford Centre for Mission Studies.

Originally from South Korea, Seoyoung is an ordained minister in the Presbyterian Church in the Republic of Korea. She completed her PhD at the University of Manchester and also holds degrees from McCormick Theological Seminary and Hanshin University, alongside studies at the Bossey Ecumenical Institute.

She currently serves on the World Council of Churches Central and Executive Committees. Her interests include applied theology, ecotheology, public theology, and connecting theological reflection with ministry practice.

Dr William Ford

Ph.D., BA (Durham), MSt (Oxford),

PGCHET (QUB), FHEA

Undergraduate Programme Lead

William joined BST in 2009, and has taught Old Testament and wider biblical subjects ever since. He is also the Programme Leader for the undergraduate programme.

He is originally from England, and studied theology and Old Testament in Durham and Oxford. He also spent six years in London, firstly serving with the London City Mission and then working as a chartered accountant. Prior to joining BST he taught at All Nations Christian College.

He is particularly interested in how we understand theologically difficult biblical passages, especially those that seem to portray God in negative ways.

Associate Lecturers

Rev Dr Karen Campbell
Rev Dr Andrew Campbell
Rev Dr Ryan David Hawk
Dr Walter McConnell
Dr Irene McMahon
Rev Dr Livingstone Thompson
Rev Dr Annes Nel
Dr Matt Williams
Dr Neil Morrison

Join *Our* **Community**

While you are here, BST seek to provide intentional space for your support and spiritual development.

Weekly Worship Services

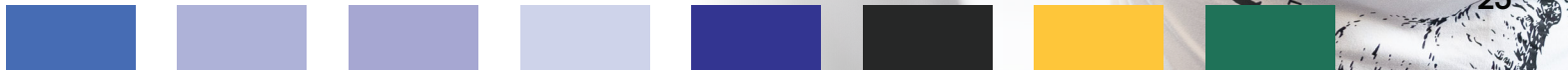
The weekly rhythm of Chapel services on Tuesdays is foundational to our spiritual commitment and dependency on God as a School.

Special Events

BST also believes in the principle of pausing in the midst of our normal activities in order to listen to God, come together to mark a significant season. Throughout the year, we will facilitate special events - whether retreats or celebrations - that allow our souls to be fed and restored, and our community space to have space to rejoice.

Service

We believe that our love for God is demonstrated in our love for one another, there are various ways we serve each other. We also have opportunities to serve beyond the campus through placements, voluntary links to the community, and events and conferences.





Our *Pastoral* **Care**

Through Pastoral Care, we seek to provide a safe place for students.

In addition to the pastoral benefits of our Chapel services and Fellowship groups, Pastoral Care offers an opportunity for individual students to be listened to, safely process their experiences, and to explore ways of moving forward. The way forward may include one-to-one sessions with our Pastoral Care Coordinator or being introduced to an external counselling service.

We are committed to providing Pastoral Care in a safe, supportive and professional manner.

Alumni Story

Mitch (Crown Jesus Ministries)

It was September 1995 that I stepped into Belfast School of Theology (formerly Belfast Bible College) for the first time. I was only a Christian a few years and my Pastor Rev Ken McBride suggested to me and Pip Kerr that this School would give us a solid footing in the Bible and a robust application in life.

He was right. The first 6 months were a shock to my system with provoking questions such as “Did Matthew really write Matthew? What evidence is there for this?” And “Was Paul right when he said..... and does that mean it is right to think the same today?” I soon learned it wasn't the Bible the lecturers were questioning. It was me and why I believe it to be true. Those formative three years of part-time studies set me up for full time ministry and further studies that led to a Masters in Theology.

Some thirty years on, I would give the same advice my pastor gave me all those years ago: 'This School provides a solid footing in the Bible and a robust application in life.'



A background photograph of three students in a brick building. A young man in a green jacket and backpack is smiling and talking to a young woman with long blonde hair seen from behind. Another student is partially visible on the right. The image has a green overlay on the left side.

Undergraduate

Study BA (Hons) Theology

DATES: September - May

DURATION: 3 Years Full-Time / 6 Years Part-Time



Our Theology Course

We are living in a time of unprecedented change - culturally, socially, and spiritually. Every day presents new conversations, new tensions, and new opportunities to encounter people with a wide spectrum of beliefs and experiences. Whether online or in person, in local communities or global networks, we are constantly invited into spaces where political views, ethical challenges, and cultural perspectives collide.

In this landscape, the call of the Christian is not simply to defend truth but to embody it - bringing the reality of God into the world in ways that are compelling, wise, and deeply rooted in love. This requires more than quick answers or reactive responses. It requires discernment, maturity, and a willingness to understand before being understood.

As the world continues to evolve, so too must our ability to engage with it. Our aim is to help you grow as a thoughtful communicator, a faithful presence, and a resilient disciple - equipped to serve Jesus wherever He leads, with clarity, conviction, and compassion.

The Course

BA (Hons) Theology

In our rapidly changing world, we are continually presented with opportunities to interact with a diverse range of people.

Each day we have to engage with political opinion, social debate, ethical conundrums and cultural diversity. These can be local or global, physical or virtual, simple or complex and you have the choice as to how we respond and bring the reality of God into the world.

In the twenty-first century, we increasingly have to interact with people who hold diverse worldviews and principles. The challenge is in understanding views different from our own and how to communicate the truth of Scripture in a way that is understandable and meaningful to each listener/audience.

How can we move beyond debate to bring a dynamic and transformative demonstration of the gospel so that it transforms the people around us?

The opportunities for serving Jesus in this century are continually developing and changing. We want to equip you with the ability to encounter new situations with knowledge, maturity and Christian character.

We want to help you develop as a critical thinker who can communicate clearly, a practitioner with the ability to engage meaningfully, a disciple committed to following Jesus.



Spine Modules

At the heart of this course is a vision to form thoughtful, faithful, and equipped disciples of Jesus - people who are deeply rooted in Scripture, theologically informed, and practically prepared to serve in a complex and ever-changing world.

Through a balanced and integrated programme of study, you will explore the Bible, theology, history, mission, culture, and practical ministry. Each strand of the course is designed to help you grow in your knowledge, character, and calling.

Whether you are studying the ancient text of Scripture, wrestling with contemporary ethical questions, or serving in your local community, you will be supported to develop as a reflective practitioner and a confident communicator of the gospel. The following outlines the key areas of study that form the foundation of your theological and ministerial training.

1 . Biblical Studies

Understanding how to read and interpret the Bible is a key feature of this course. We want you to develop a high level of Biblical literacy and a depth of knowledge about how to connect the teachings of the Bible to the people with whom you will live and serve. Looking at the Biblical text in its original context gives an awareness of how the message of the text would have been understood by the first hearers and how culture and translation can impact your understanding of the Biblical text.

2 . Systematic Theology

The language and terminology we use to describe the Christian faith has been developed over the last two thousand years. These terms, such as, Christology, trinitarian, eschatology, sacrament and many more are used regularly by the Church but are packed with meaning and depth that are important for those in Christian ministry and leadership to understand. You will be encouraged to consider a range of views on different issues, including those different from your own, to gain an understanding of different viewpoints and a better understanding of your own views. The interdenominational and international nature of the School provides a context for some interesting discussions and debates.

3. Ministry Formation and Practice

We will seek to equip you to be a disciple, confident in faith, reflective in practice, informed and passionate in theological thinking, and active in serving your local community.

YR1 — Calling, Discipleship and Service:

Students have the opportunity to serve regularly in a weekly placement, chosen in consultation with the School. The lectures will examine the subjects of calling and vocation, leading into a focus on discipleship and spiritual formation.

YR2 - Collaborative Skills and Ministry Development

Students continue with a weekly placement and lectures which combine to develop their skills and experience of work, both in a team and in a variety of contexts.

YR3 - Vocation and Connection:

A 4-week 'Block Placement' leads into an opportunity for the student to develop further their skills, and test out a possible vocation. While reflective practice is built into the entire three years, an intense period of reflective practice is factored into the final year. This is combined with a focus on next steps after graduation.



4 . Historical Studies

The Church today stands on the foundation of those who have gone before, people and events that have spread the Church into the worldwide phenomenon it is. Starting from the years after the early Church of the New Testament to the present day you will look at the successes and failures of the decisions that have been made by those who have gone before us.

5 . Mission Studies

Sharing the Good News of Jesus is a central purpose/vision within Scripture. We want you to be able to understand how to speak into a range of cultures and contexts, whether local or global. You will have the opportunity to study other religions, understanding what others believe and the reasons behind their worldview.

6 . Practical Studies

Throughout the degree, you will learn key skills, such as communication and critical thinking, which will allow you to be confident in working in any area. But we also allow students to focus on particular areas which are of interest to them and their future calling.

7 . Engaging The World

In Engaging the World, you will grapple with the interconnectedness of the Bible and theology; with issues, such as, culture, economics, politics, worldviews and ethical issues.

YR1 - The Bible and Mission:

You will develop a Biblical understanding of mission based on God's engagement with the world from Genesis to Revelation, centred on the work of Christ. You will then explore how this should inform your engagement in the world in mission.

YR2 - Cultures Then and Now:

Focuses on the important relationship between the Gospel and culture. You will explore how the Gospel can be communicated in ways that are relevant to different cultures, but also how the Gospel challenges aspects of all cultures including your own.

YR3 - Trends & Movements:

This module provides a detailed examination of various trends and movements, both globally and in western culture, such as neoliberalism, postmodernism, and secularism. It provides models and methods for formulating Biblically based Christian responses to these trends and movements as part of the contemporary context.



Module Choices

YEAR 1

Level 4 - Foundations

This is about learning how to study theology and acquiring the skills and knowledge, as well as an understanding of the underpinning concepts and principles, which allow you to study the Bible in more depth.

Compulsory Modules

Engaging the World I: Bible and Mission
Ministry Formation and Practice I:
 Calling, Discipleship and Service
Old Testament Foundations
New Testament Foundations
Thinking Theologically
The Church Through the Ages

YEAR 2

Level 5 — Development

We encourage you to develop your ability to evaluate theological issues and then to communicate your ideas and arguments in an articulate way. We want you to be able to think more independently and be able to reflect on your Christian experience and practice in the light of what scholars write.

Compulsory Modules

Engaging the World II: Cultures Then and Now
Ministry Formation and Practice II: Collaborative Skills and
 Ministry Development
Biblical Interpretation
Christian Doctrine
Church in Practice

Optional

Text to Context
Pastoral Care

YEAR 3

Level 6 - Specialisation

The final year of the degree is when we really push students past the point where they just understand Biblical and Christian issues to where they can critically evaluate them, suggest solutions to complex problems, and then communicate solutions in a variety of ways. This year is about developing your ability to work independently in the workplace and ministry, understanding how to exercise good judgement, how to be accountable and how to think analytically about everything you do.

Compulsory Modules

- Engaging the World III: Trends and Movements
- Ministry Formation and Practice III: Reflective Practice and Mission
- Challenging Biblical Texts
- Dissertation or Independent Study

Optional

- Preaching and Worship
- Biblical Language
- World Religions
- Christian Leadership

Modules



How the course is taught

This degree programme is taught in a variety of interesting ways: lectures, group-work, class discussions, seminars, online forums and interactive exercises. Assessment is mainly through writing essays or reflective journals but there may also be exams, presentations and portfolios. This varied approach helps you to develop a wide range of skills.

COURSE COMPOSITION:

Around 8—10 hours per week of teaching and 25—30 hours per week of reading, individual study, placement and community participation.

KEY FEATURES OF THIS COURSE:

Study part-time or full-time.

Placements and practical training are a core element.

You can also complete the first year of the Degree and gain an HE Cert; if you complete the first and second years of the Degree, you can gain a Dip HE.

Potential to transfer from another theological college or university.

Prior learning and experience taken into consideration for entry for mature students from the UK/Ireland.



Studying with us will allow you to:

Learn how to communicate information, ideas, arguments, principles and theories, both written and oral.

Present your reasoned view while taking on board the views of others.

Become a critical thinker, looking beneath the surface of theological issues.

Understand the Biblical and theological foundations of Christian life and ministry and apply this to your own spiritual formation and in facilitating the spiritual formation of others.

Learn how the Bible impacts people.

Learn to take the teaching of Scripture and apply it to the world today, understanding how it shapes and influences contemporary issues.

Learn to work as a team member.

Come away with an understanding of the richness of Christianity and how it has been influenced by context and shaped by the thinking of individuals and churches throughout history.

Discover how to study and also to reflect on your strengths and weaknesses.

Be equipped with skills for ministry and ongoing personal spiritual development.

Grow in Christian character and develop as a disciple of Jesus.

Validation & Entry Requirements



VALIDATION:

This course is delivered in partnership with the University of Cumbria. The teaching is designed and delivered by BST lecturers while the course is validated by the University of Cumbria to ensure it is of an appropriately high standard. For more info visit: www.cumbria.ac.uk

Our university-validated courses have been Quality Assured by QAA.

ENTRY:

64 UCAS points, typically A2 CC, plus 4 GCSE's at Grade C or higher to include English Language (or equivalent). Prior learning and experience taken into consideration for entry for mature students from the UK/Ireland.

ENTRANCE / EXIT POINTS:

This programme is flexible, allowing you to complete different parts and still achieve a qualification. Complete year 1 and you can graduate with a Cert HE. Complete years 1 and 2 and you can achieve a Dip HE. Complete all 3 years and you can receive a BA(Hons) Degree. If you leave with a Cert HE or Dip HE, there is an option to return at a later date to continue to study towards the degree.



HE Cert In Theology

The HE Certificate in Theology is designed to prepare men and women for Christian life and ministry.

Theology is ever relevant in our changing world. Not only does it influence the shaping of societies and cultures, but studying also gives you a greater knowledge of your own identity and deepens your faith. This course is for suitable for a wide variety of people; whether looking to enter into Christian Ministry & Mission or for your personal formation and discipleship.

This one year certificate programme combines academic study with practical learning, and is underpinned by discipleship and spiritual formation throughout the course. This course starts by revealing a deeper understanding of the Bible and then using this knowledge to apply Biblical truths to many relevant issues facing Christianity and the church today.

Practical **Training**

Practical Placements provide exciting opportunities to apply theory in service. All students participate in both weekly and block placements as part of the undergraduate course.

WEEKLY PLACEMENTS

Students can choose from a wide variety of weekly placement opportunities with amazing organisations. Work with children, young people, the elderly; work with churches, charities or organisations with local, global and inter-cultural impact. Four semesters working in specific situations allows the development of meaningful relationships and gives valuable experience and significant opportunity to learn and develop skills and strengths for ministry and employment. The learning from student experiences on placement is developed through class discussion and assignments in the 'Ministry Formation and Practice' modules.

BLOCK PLACEMENT

For the summer at the end of second year, students select and plan a block placement — at least four weeks full-time — either overseas or within UK/Ireland. These opportunities are as varied as students' interests, vision and organisational skills, the School framework and UK Government travel advice will allow! Students spend this more concentrated period of time working in ministry situations alongside full-time workers. Through this block placement, you will experience the challenges and possibilities of your chosen areas of work, helping you discern suitability for a future commitment as you engage in detailed reflection on an aspect of your choice.

42 **Placement**

STUDENT'S VIEWS

"This summer my placement was with Exodus.

I had the opportunity to lead a team of young people through a small group course, and eventually away on a mission team for 10 days in the West of Ireland. Over that time, my leadership skills were bolstered and strengthened as I stepped out of my comfort zone again and again. We experienced mission on the move! Every day looked different, as we served the community in practical ways and carried the hope of the gospel message through evangelism on the local streets. We were shaped by how we witnessed God so clearly at work through his Spirit."

Student: Harry

"During my placement with Prison Fellowship NI, I saw the power of God at work with people we may otherwise forget about or look down on. He wasn't limited by their prison cells, He broke right in and is transforming lives, an unforgettable experience which I witnessed over and over during my time there. This taught me how He isn't restricted by where we are spiritually or physically either, and it has been a life-shaping experience to be a part of the work there."

Student: Kate

"My placement experiences at BST have been absolutely brilliant. In particular, my Block Placement over August 2025 was a really special time of growth and continual reminders of how we need to depend on God in everything. I spent a month volunteering at Capernwray Hall in England, where during the summer they hold week-long holidays for families and young people. My tasks there included leading small groups and helping with guest activities, as well as getting stuck into doing dishes and housekeeping tasks. Serving in this way brought wonderful opportunities to develop connections with guests and other volunteers, as well as seeing God work through even the small and simple moments."

Student: Molly

A SUPERVISOR'S VIEW

"My placement student hit the ground running, engaging pupils in God's Good News in both primary and secondary schools, through assemblies, RE lessons and SU groups across East Antrim. It was a joy to see him grow in his understanding and confidence of how to engage pupils through the writing and delivering of a program, increasing his understanding of how to partner with and empower the local church. He was a huge blessing to East Antrim and Scripture Union!"

Supervisor: Sarah



Graduate Certificate In Theology

One day a week for 24 weeks and a 1 week learning intensive in one academic year. This course is ideal for those in the first few years of working in a church, mission or ministry context. Also useful for those who want to gain a deeper understanding of theology. Covering the three areas of Bible, Leadership and Engaging the World, this course supplies useful knowledge and core theological tools to get your leadership journey off to a great start.

COURSE INFO/DATES

September to May. Twelve week semesters. One day a week and a one week intensive in Spring.

COURSE COMPOSITION

Around 3 hours teaching per week. One week teaching intensive in January.

LEVEL

This is an academic level 6 course - Graduate.

ENTRY

A degree from a recognised university at 2:2 level or a professional qualification at the same level, also 1 year of active engagement in some form of Christian ministry.

MODULES

There are 3 modules
Challenging Biblical Texts
Christian Leadership
And, Either Engaging the World III or
Preaching and Worship

COST & APPLY

To find out more information about this course, along with fees and how to apply, please go to:

www.bst.ac.uk/gradcert

Note: This course is not available to international students.



Graduate Diploma In Theology

Full-time in one year or part-time over two years, this course is great for anyone interested in developing a broader theological understanding, as it requires daily study over the course of the academic year. This course is aimed to help those who have never studied theology before to develop a theological toolkit to bring biblical wisdom and a mature understanding of practical theological issues. The Grad Dip looks at six theological areas and you can choose modules tailored to your areas of interest, as well as the possibility of undertaking a piece of independent study.

COURSE INFO/DATES

September - June
Study over 1 year full-time / 2 years part-time

LEVEL

This is an academic level 6 course - Graduate.

ENTRY

A degree from a recognised university at 2:2 level or a professional qualification at the same level, also 1 year of active engagement in some form of Christian ministry.

MODULES

Choose 6 Modules from:
Preaching & Worship
Leadership
Engaging the World
Independent Study
Challenging Biblical Texts
Biblical Language
World Religions

Modules will be offered subject to student interest.

COST & APPLY

To find out more information about this course, along with fees and how to apply, please go to:
www.bst.ac.uk/graduate-diploma



Postgraduate

MA in Practical Theology

DATES: August - May

DURATION: 2 Years Part-Time

Fully Online MA in Practical Theology

Our MA in Practical Theology is an exciting opportunity to join an online learning community who are focused on exploring the interaction between theological thinking and ministry/Christian practice.

The two-year, part-time fully online programme covers Practical Theology, Theological Reflection, other areas of theological thinking and practice including mission, ministry and leadership. Throughout the course, students have the opportunity to apply their learning to areas of ministry or practice in their own context

Format

Fully online, part-time (2 years)
Validated by: University of Cumbria
Start Date: August

Application Deadlines:

See the website for closing dates for application for both local and international applicants.

The Course Structure

Year 1:

1. Foundations of Practical Theology:

Introduction to key concepts and models.

2. Biblical and Theological Perspectives in Praxis:

Develops skills in theological thinking and biblical interpretation.

3. Reflective Practice in Practical Theology:

Encourages critical and theological reflection on personal and organizational ministry experiences.

4. Trends and Debates in Contemporary Mission:

Connects personal experience with current mission research.

Year 2:

5. Ministry in Practice:

Applies practical theology methods across various ministry contexts.

6. Leadership in Faith-related Contexts:

Explores leadership theories within faith-based and secular environments.

Final Semester:

Dissertation/Project: A 12,000-word piece applying course learning to a chosen area of ministry or practice, either as a traditional dissertation or a project report.

DELIVERY

Module Delivery:

Each module spans 6 weeks, comprising:

At least 4 hours of live tutor sessions,

20 - 30 hours of guided online learning activities and additional reading, not including assignment preparation.

Assessments:

Varied, including written assignments, reports, and recorded presentations.

Technology Requirements:

Reliable broadband internet

Laptop or computer for coursework

Smartphone for recording presentations (if needed)

Resources Provided:

Access to MS Office, Perlego (digital library), and EBSCO (academic journals)



Belfast
**School of
Theology**
At Stranmillis

Entry Requirements

An undergraduate honours degree (2:1 or above) in any subject.
A reasonable amount of experience in Christian ministry or service.
Prior learning and experience taken into consideration.

An alternative entry route may be available for those who do not meet the above requirements. Contact us for more information: admissions@bst.ac.uk.

How to Apply

Application Process:

Complete the online application form.

Submit two references (one from church leadership).

Participate in an interview (online or in-person).

COST & APPLY

To find out more information about this course, along with fees and how to apply, please go to: www.bst.ac.uk/ma





PG Cert In Practical Theology

The Postgraduate Certificate in Practical Theology consists of 3 compulsory modules. These can accrue towards the Postgraduate Diploma and the MA.

1. Foundations of Practical Theology:

Introduction to key concepts and models.

2. Biblical and Theological Perspectives in Praxis:

Develops skills in theological thinking and biblical interpretation.

3. Reflective Practice in Practical Theology:

Encourages critical and theological reflection on personal and organizational ministry experiences.



PG Diploma In Practical Theology

The Postgraduate Diploma in Practical Theology at BST is a two-year part-time course. Further study can be added to the PG Dip to complete the MA in Practical Theology.

MODULES 1-3 of PG Cert +

4. Trends and Debates in Contemporary Mission:

Connects personal experience with current mission research.

5. Ministry in Practice:

Applies practical theology methods across various ministry contexts

6. Leadership in Faith-related Contexts:

Explores leadership theories within faith-based and secular environments.

A person is seen from behind, sitting at a desk and using a silver laptop. The laptop screen displays a website with various colorful banners and text. The entire scene is overlaid with a semi-transparent blue filter. The text on the right side of the image is white and bold.

New MA Scholarships Now Available

Up to 15 New Scholarships to be Awarded in the MA in Practical Theology Programme

Starting September 2026

Belfast School of Theology is pleased to announce the establishment of new scholarships for students enrolling in the MA in Practical Theology course in September 2026.

Each scholarship will cover 50% of the total cost (course fees and enrolment fees) of the two-year MA programme.

To apply please complete both the application for the MA in Practical Theology programme and the MA Scholarship Application Form.

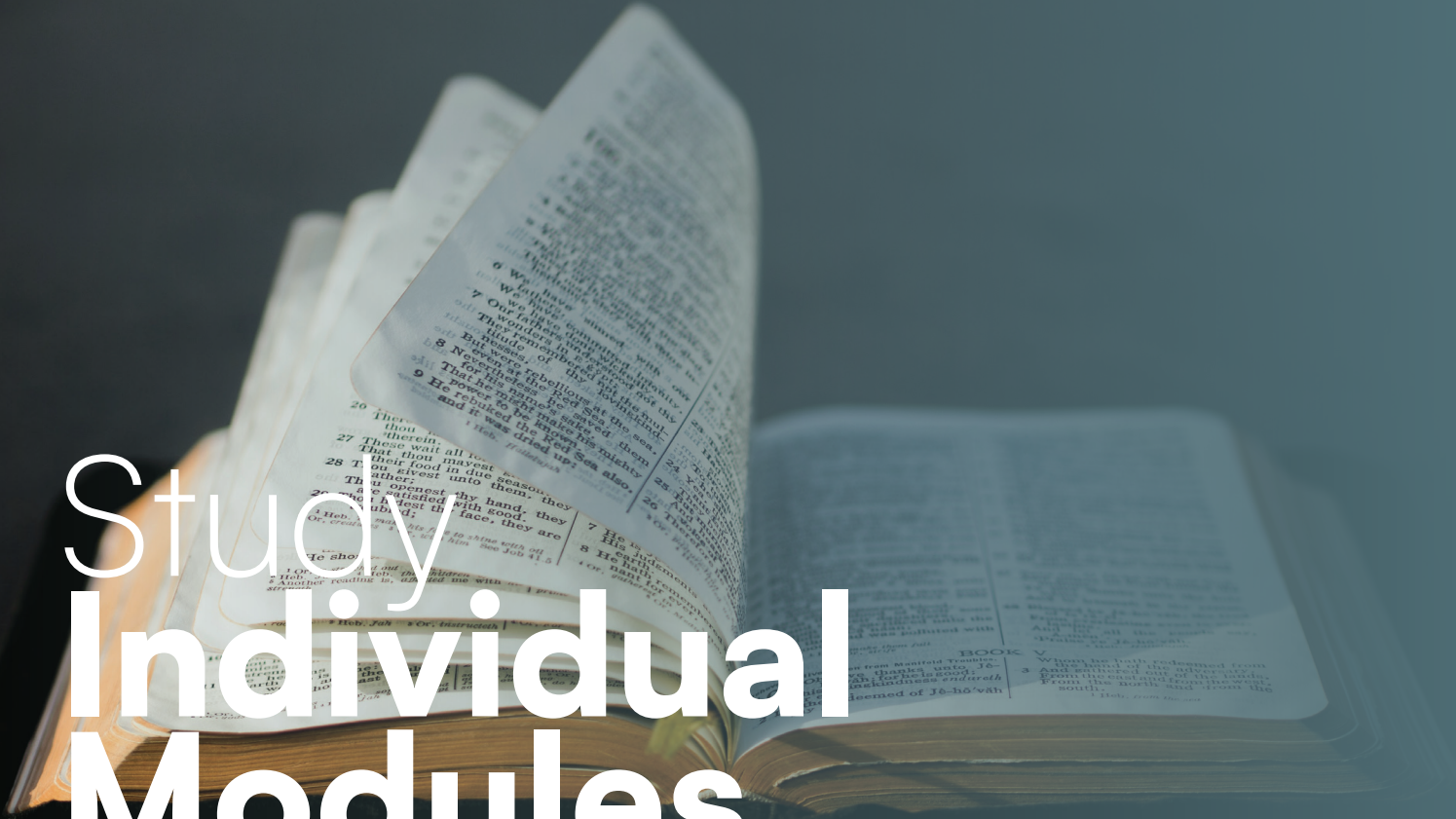
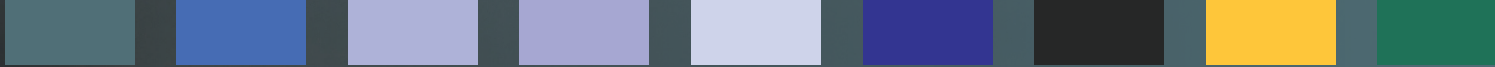
Both Application Forms and the Terms and Conditions are available online at www.bst.ac.uk

All applications must be received by 12pm (noon) 7 August 2026

Send inquiries to admissions@bst.ac.uk
or visit www.bst.ac.uk/ma-scholarships for
info and to apply.

INFO & APPLY





Study Individual Modules

Individual Modules at BST

Explore the enriching world of theology with Belfast School of Theology's Individual Modules.

These courses offer a unique opportunity to tailor your education to your specific interests and needs, allowing you to delve deeply into subjects like Old and New Testament Foundations, Church History, and Biblical Languages without committing to a full degree programme. Ideal for church leaders, active Christians, or anyone seeking to deepen their faith and practical skills, these modules provide flexibility, professional development, and personal growth. Embrace this chance to enhance your theological knowledge and make a meaningful impact in your community.

Modules

Individual modules on offer are subject to availability and can differ from year to year.



Interested?

Scan for course info & to apply...

www.bst.ac.uk/individualmodules



Pastoral **Care Course**

Pastoral Care Course at BST

The Pastoral Care course at Belfast School of Theology offers an enriching opportunity to deepen your understanding and skills in providing compassionate care within various contexts, including ministry and public sectors.

By studying this course, you will engage with theology, reflective practices, and practical tools essential for effective pastoral care. The course also offers the possibility of earning university credits, enhancing your academic and professional journey. Whether you are already in a pastoral role or aspiring to one, this course is designed to equip you with the knowledge and confidence to make a meaningful impact. Start your transformative journey today!



Interested?

Scan for course
info & to apply...

www.bst.ac.uk/pastoralcare



Catalyst Part-Time Evening Courses & Events

A School For Saints And Scholars

B.S.T. is committed to a teaching theology in a unique way. Following the great Irish tradition of Celtic Spirituality, the School combines high scholarship, deep spirituality and pioneering mission into one ethos and educational experience.

This year, the Catalyst programme reflects this 'heart, head and hands' approach.



Interested?
Scan for course
info & to apply...

www.bst.ac.uk/catalyst





Saints & Scholars Podcast

Launch: October 2026

Hosts: Rev. James Burnett & Dr. Bob Key

BST's new Saints & Scholars podcast explores theology, spirituality, mission, apologetics, culture and contemporary issues through a biblical and theological lens. Addressing the questions Christians face today, each episode seeks to equip listeners to think deeply, live faithfully and engage confidently with the world around them.

Available **FREE** on all podcast platforms & via our website.



An Introduction to Christian Apologetics Course Starts: Saturday 3 October 2026

Designed to strengthen confidence in the Christian faith, this course explores key apologetic questions and contemporary challenges facing believers today. Through biblical teaching, discussion and practical engagement, participants will learn how to articulate and defend their faith with clarity and grace.

How to Read the Bible in Context

When: Tuesday Evenings // First 6 Weeks of Semester One

Facilitators: Dr. Bob Key & Dr William Ford

Misunderstanding Scripture can lead to confusion, error and unhealthy practices. This course explores how to interpret the Bible responsibly by considering historical, cultural and literary context. Participants will examine contemporary questions surrounding science, gender, theology and the role of the Holy Spirit, discovering how deeper biblical understanding leads to greater clarity and faithful application.

Refresher New Testament Greek

Did you study New Testament Greek? Are you a minister/pastor or former theology student? This is an opportunity to get back to the sources (ad fontes), the RNTG Course will be taught over 2 semesters at an easy pace.



Dr. Bob Investigates: New Religious Movements

When: Tuesday Evenings // Second 6 Weeks of Semester One

Facilitator: Dr Bob Keay

From Mormonism to Jehovah's Witnesses and beyond, this engaging course examines the origins, beliefs and practices of various new religious movements. Participants will gain a clearer understanding of how these groups differ from historic Christian faith and learn how to engage thoughtfully and compassionately with those who belong to them.

The Desiring God Course

When: Tuesday Evenings // 6-8 Weeks, Semester Two

Facilitators: Honorary Fellows and Team

*“As the deer pants for streams of water, so my soul longs after you,
O Lord (Psalm 42:1).”*

Are you longing for more in your relationship with God? This in-person spiritual journey is designed for those who desire deeper intimacy with Christ and greater spiritual growth. Combining teaching, reflection and practical discipleship, the course includes optional one-to-one mentoring conversations with experienced pastors and theologians, helping participants discern the next steps in their faith journey.



BST Alpha Course

When: Semester Two (Beginning January 2027)

As part of BST's commitment to mission, we are delighted to launch our first Alpha Course. Situated in the heart of Belfast's university district, BST seeks not only to prepare people for mission but to actively participate in it. Alpha creates a welcoming environment where people can explore life's big questions and discover the Christian faith.

Public Lecture Series

When: Dates to be Confirmed

Format: Four Public Lectures Across the Academic Year

A series of special lectures featuring respected speakers addressing some of the most significant questions facing Christianity today. Topics will engage faith, culture, ethics, philosophy and contemporary apologetics, providing opportunities for deeper learning and public engagement.

Note: Catalyst courses available and dates are subject to change. Visit our website for the latest info and to register: www.bst.ac.uk/catalyst



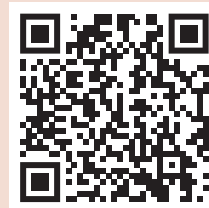
Women's **Study Fellowship**

Women's Study Fellowship (WSF)

What does it mean to be a woman of God in the twenty-first century? How can Christian women be equipped to serve God in the family, community, workplace and in the church?

WSF offers a unique opportunity to learn in a supportive community with like-minded women from a range of church backgrounds, varied life experiences and at different stages in their walk with the Lord. The dynamic of worship, study and fellowship in community nurtures faith and stimulates spiritual growth.

Come and enjoy quality Bible teaching from qualified and experienced tutors, worship, prayer and fellowship. The programme usually runs on Monday mornings. A typical Monday morning in WSF includes worship and prayer, two or three sessions of biblically based teaching by our team of experienced tutors, and informal fellowship over tea or coffee.



APPLY

Apply via the School of
Theology website:

www.bst.ac.uk/wsf

Access to Learning

At Belfast School of Theology, we are committed to working collaboratively with our students to understand their needs and provide a supportive learning and community environment for those with disabilities or specific learning needs.

The term ‘disabilities’ is broadly defined and includes mobility and/or sensory impairments, medical conditions, mental health conditions and intellectual disability, autism (ASD) and specific learning difficulties (such as dyslexia and dyspraxia). Your first point of contact is normally with the School’s Disability Support Officer (DSO) whose role is to provide you with relevant information and guidance related to accessing additional support — and to encourage you to get everything in place in order to maximise support.





Finance & Fees

For all of our undergraduate courses, you are able to apply for a student loan if you are eligible. It is the same process as for any other UK university.

For students from Northern Ireland, our fees are slightly higher than the loan from the Student Loans Company, so you will have to pay us directly a small shortfall payment. This payment can be spread over the course of the year.

The enrolment fee has to be paid each year before the start of the first term.

For full details of fees, please see our website. All fees may be subject to changes and increases.

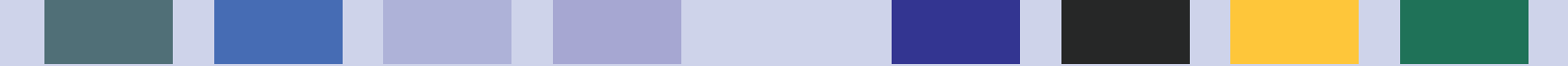
Applying

Everyone is welcome to apply to study at the School and our application process is designed to make sure that we will be a good fit for each other. We want everyone who comes to study to thrive and benefit from their education.

Application is via our website:
www.bst.ac.uk

Click on the course you want to apply for and please take some time to discover exactly what is involved in the course.





Then on that page, press the 'Apply Now' button.

The form will ask for:

Personal details.

Details about your education, serving and working experience.

Information about you, and how you think studying theology will benefit you.

Names and emails for two referees.

When you submit your form, we request copies of relevant academic certificates.

Local Applicants

When we have checked your application form is acceptable, and received two suitable references and certificate copies, we arrange an interview. You will hear the outcome within a week.

International Applicants

Application is via the same form and process, however there are extra requirements which we detail via email on receipt of your application form.

Postgraduate Interviews

Postgraduate interviews will take place online via Microsoft Teams.

Application Deadlines

See the website for closing dates for application for both local and international applicants.



Belfast
**School of
Theology**
at Stranmillis

CONTACT US

Belfast School of Theology,
Main Building,
Stranmillis University College,
Stranmillis Road,
Belfast,
BT9 5DY

T: 028 9030 1551
www.bst.ac.uk | info@bst.ac.uk